

MonoTrap TD RGC18TD (graphite carbon contained) for Thermal Desorption. No need for conditioning before use.

Protocol

Shaoxing rice wine

Pour 30 mL of rice wine into a 40 mL vial



RGC18TD

HeadSpace Sampling
MonoTrap RGC18TD × 1 pcs

3 hours @ room temperature

TD/GC/MS

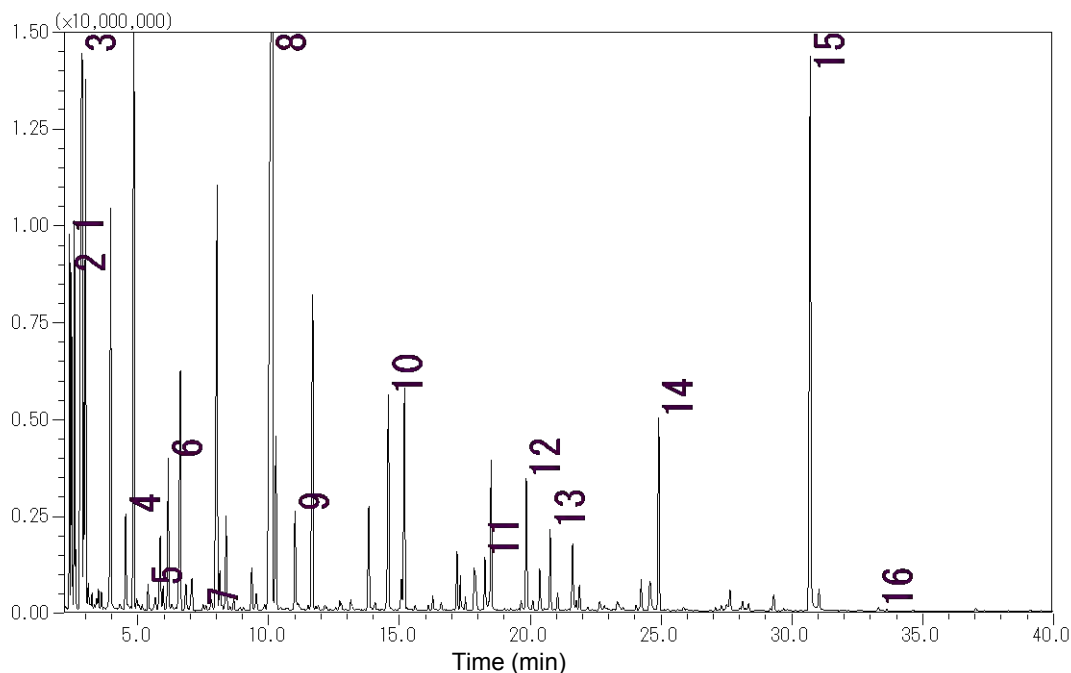


Clean Pin Hole
Septum With vial
MT Holder

Head Space Sampling Image

GC Conditions

System	: GC/MS-Thermal Desorption (T-Dex II)
Column	: InertCap Pure-WAX 0.25 mm I.D. × 30 m, df = 0.25 μm
Col.Temp.	: 40 °C (5 min) - 4 °C/min - 250 °C
Carrier Gas	: He 1 mL/min (constant flow)
Desorb Temp.	: 200 °C
Time	: 5 min
Flow	: 2 mL/min
Split	: Splitless
Cryo Trapping	: -160 °C
Injection Temp.	: 250 °C
Detection	: MS Scan (40 - 600 m/z)



- | | |
|-----------------------------|--|
| 1. Ethyl acetate | 9. Ethyl hexanoate |
| 2. Ethylidene diethyl ether | 10. Ethyllactate |
| 3. Ethyl alcohol | 11. Furfural |
| 4. Ethyl butanoate | 12. Benzaldehyde |
| 5. Ethyl 3-methylbutanoate | 13. 2,3-Butanediol |
| 6. Isobutyl alcohol | 14. Ethyl succinate |
| 7. Ethyl pentanoate | 15. Phenylethyl alcohol |
| 8. Isopentyl alcohol | 16. γ - <i>n</i> -Amylbutyrolactone |

MonoTrap series products lineup

Type	Description	Shape	Qty	Cat.No.	
MonoTrap for Thermal Desorption	MonoTrap RGC18TD	ODS, Graphite Carbon	Rod	30 ea	1050-74201
	MonoTrap RSC18TD	ODS	Rod	30 ea	1050-73201

Accessories

Description	Qty	Cat.No.
① MT HOLDER	5 pos	1050-79003
② MT STAND	1 pos	1050-79004
③ MT EXTRACT CAP	5 pos	1050-79005
④ CLEAN PIN HOLE SEPTUM WITH VIAL	72 pos	1050-79006
⑤ 200 μ L Glass Insert(Flat Space Bottom)	500 pos	1030-17211
⑥ Gerstel-MT TUBE	1 pos	1003-75003
⑦ Gerstel-MT-U TUBE	1 pos	1003-75004
⑧ T-Dex/ATD-MT Tube	1 pos	1003-75002
⑨ Linex-MT Tube	1 pos	1003-75001
TK-5 MT Passive Bag	1 pos	1050-79007
TK-10 MT Passive Bag	1 pos	1050-79008



RGC18TD



RSC18TD