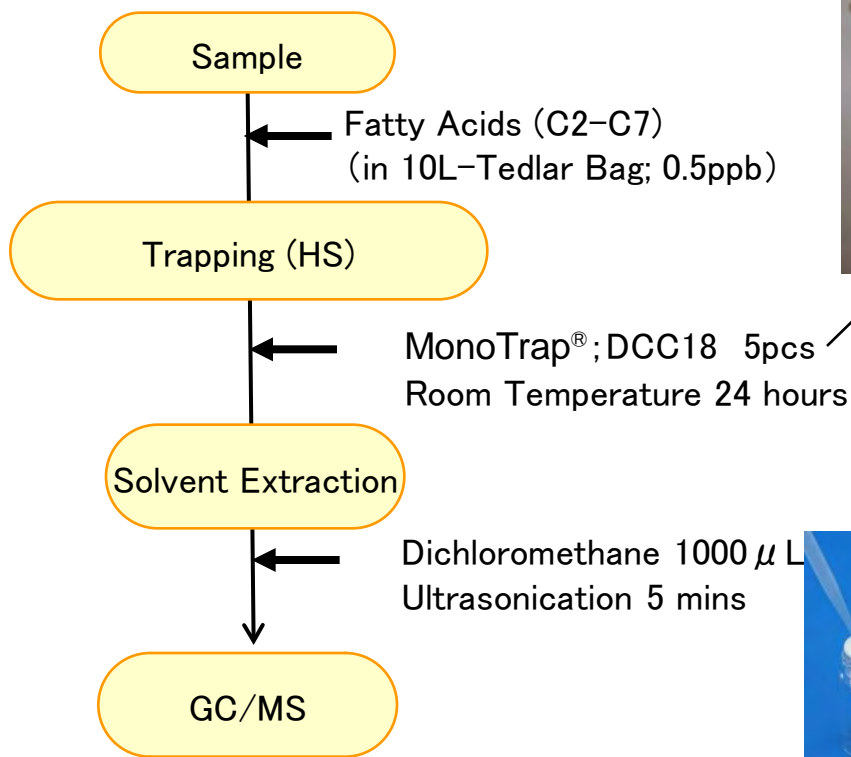


Protocol

GC Condition

System : SHIMADZU GC-2010、GCMS-QP2010

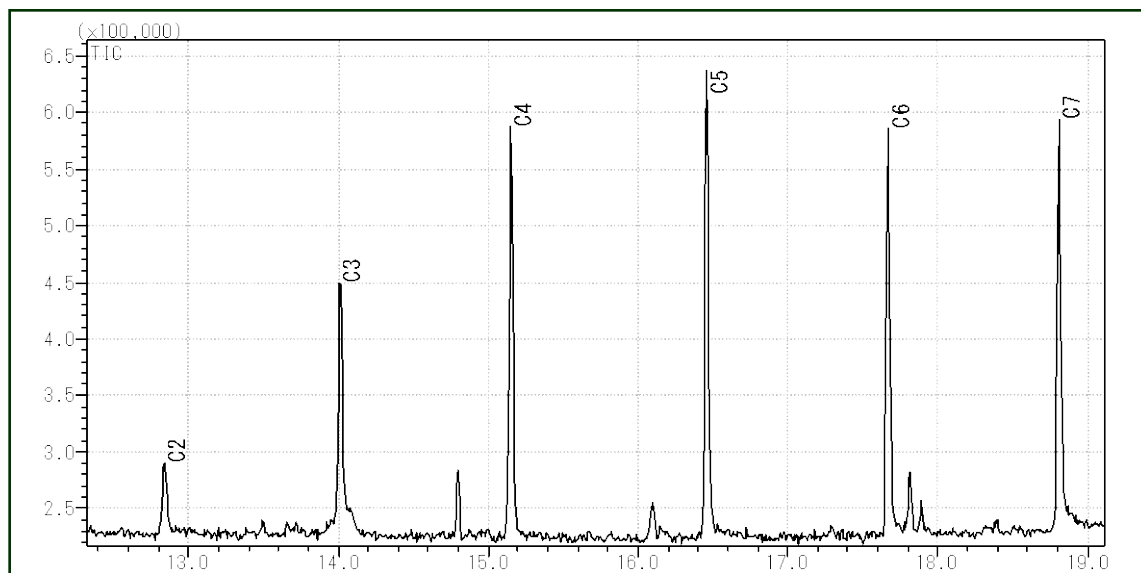
Column : InertCap Pure-WAX
0.25mmI.D. \times 30m df=0.25 μ m

Column Temp : 50°C(5min) \rightarrow 6°C/min \rightarrow 250°C

Carrier Gas : He 1.15mL/min

Injection : Split 1:5, 1 μ L
250°C

Detection : MS Scan (m/z;28-450)



MonoTrap® Series

cat.No	Description	Shape	Size	Active Carbon	Functional Group
1050-72101	MonoTrap DCC18	Disk	O.D.10mmx thick 1mm	Yes	C18
1050-72201	MonoTrap RCC18	Rod	5mm	Yes	C18
1050-71101	MonoTrap DSC18	Disk	O.D.10mmx thick 1mm	No	C18
1050-71201	MonoTrap RSC18	Rod	5mm	No	C18



DCC18



RCC18

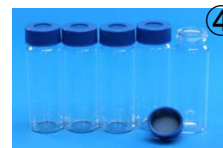


DSC18



MonoTrap® Convenient MonoTrap® Start-UP-KIT

	Description	Qty
①	MT Holder	5
②	MT Stand	1
③	MT Extract Cup with Vial(20ml)	5
④	Clean Pin Hole Septum with vial(40ml)	5
⑤	200 μ L Glass Insert (Flat Bottom)	40
⑥	MonoTrap® DCC18	20
⑦	MonoTrap® RCC18	20
⑧	MonoTrap® DSC18	20
⑨	MonoTrap® RSC18	20



<http://www.gls.co.jp/gc.html>