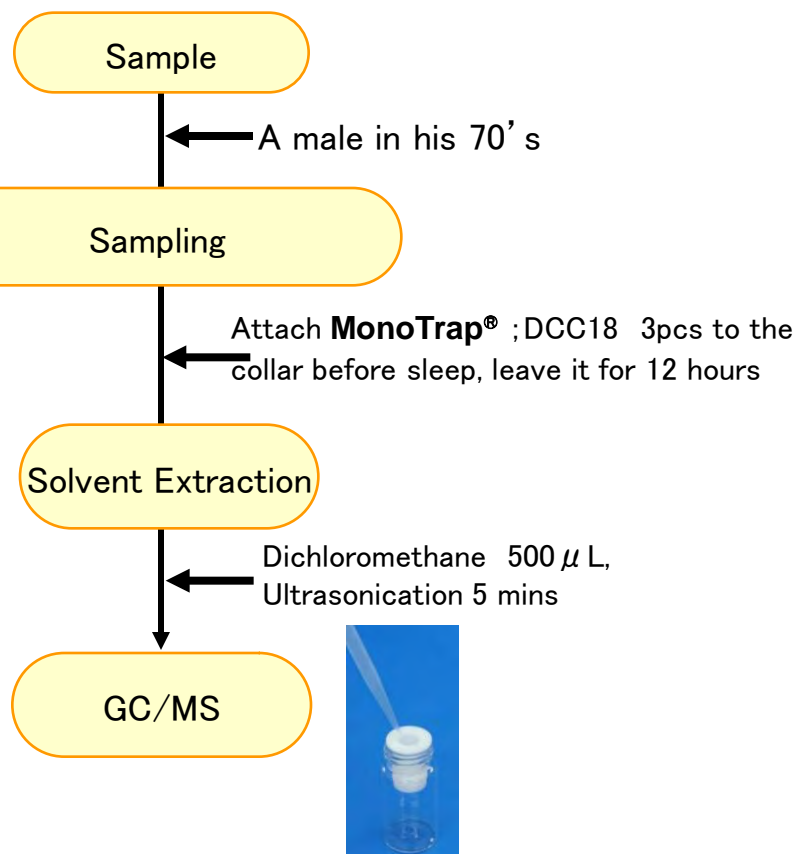


# Easy Enrichment of Aging Body Odor with MonoTrap®

## Protocol



Ref) How to attach MonoTrap



Ultra inert WAX column **InertCap Pure-WAX** is highly recommended to analyze aromatic compounds together with **MonoTrap®**

## MonoTrap® Series

cat.No	Description	Shape	Size	Active Carbon	Functional Group
1050-72101	MonoTrap DCC18	Disk	O.D.10mmx thick 1mm	Yes	C18
1050-72201	MonoTrap RCC18	Rod	5mm	Yes	C18
1050-71101	MonoTrap DSC18	Disk	O.D.10mmx thick 1mm	No	C18
1050-71201	MonoTrap RSC18	Rod	5mm	No	C18



DCC18



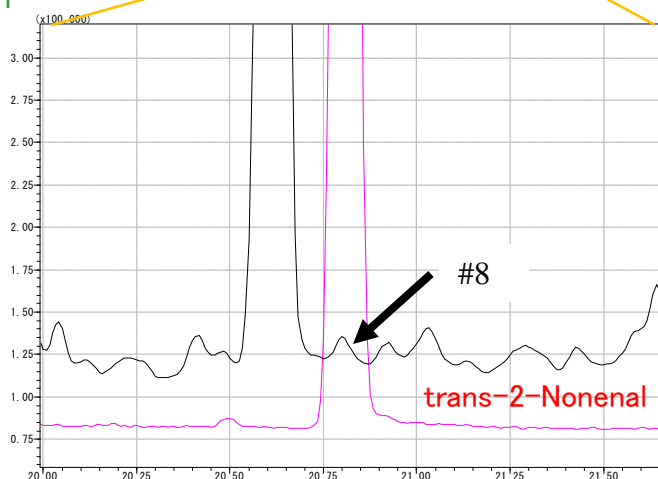
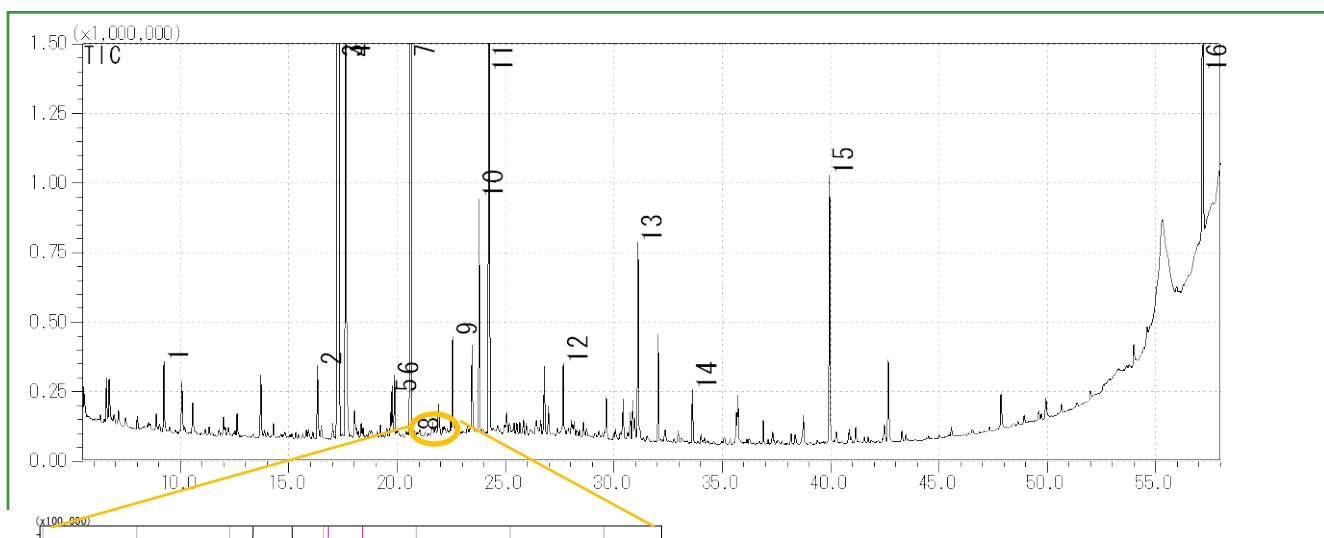
RCC18



DSC18



RSC18



### GC Condition

**System** : SHIMADZU GC-2010, GCMS-QP2010Plus  
**Column** : InertCap Pure-WAX(Cat.1010-68142)  
 0.25mmI.D. × 30m df=0.25 μm  
**Column Temp** : 40°C (5min) → 4°C/min → 250°C (5min)  
**Carrier Gas** : He 120kPa  
**Injection** : Splitless, 1 μL  
**Detection** : MS Scan (m/z;20-350)

- |                     |  |
|---------------------|--|
| 1 D-Limonene        | 9 Propylene Glycol   |
| 2 Nonanal           | 10 Heptadecane   |
| 3 Tetradecane       | 11 Menthol   |
| 4 m-Dichlorobenzene | 12 Salicylic acid, methyl ester                                    |
| 5 2-Ethyl-1-hexanol | 13 Ceraphyl 230 ← Emollient Agent                                  |
| 6 Decanal           | 14 1-Dodecanol   |
| 7 Pentadecane       | 15 Crotamiton ← Cream that the sample put on his body before sleep |
| 8 trans-2-Nonenal   | 16 trans-Squalene  |

<http://www.gls.co.jp/gc.html>