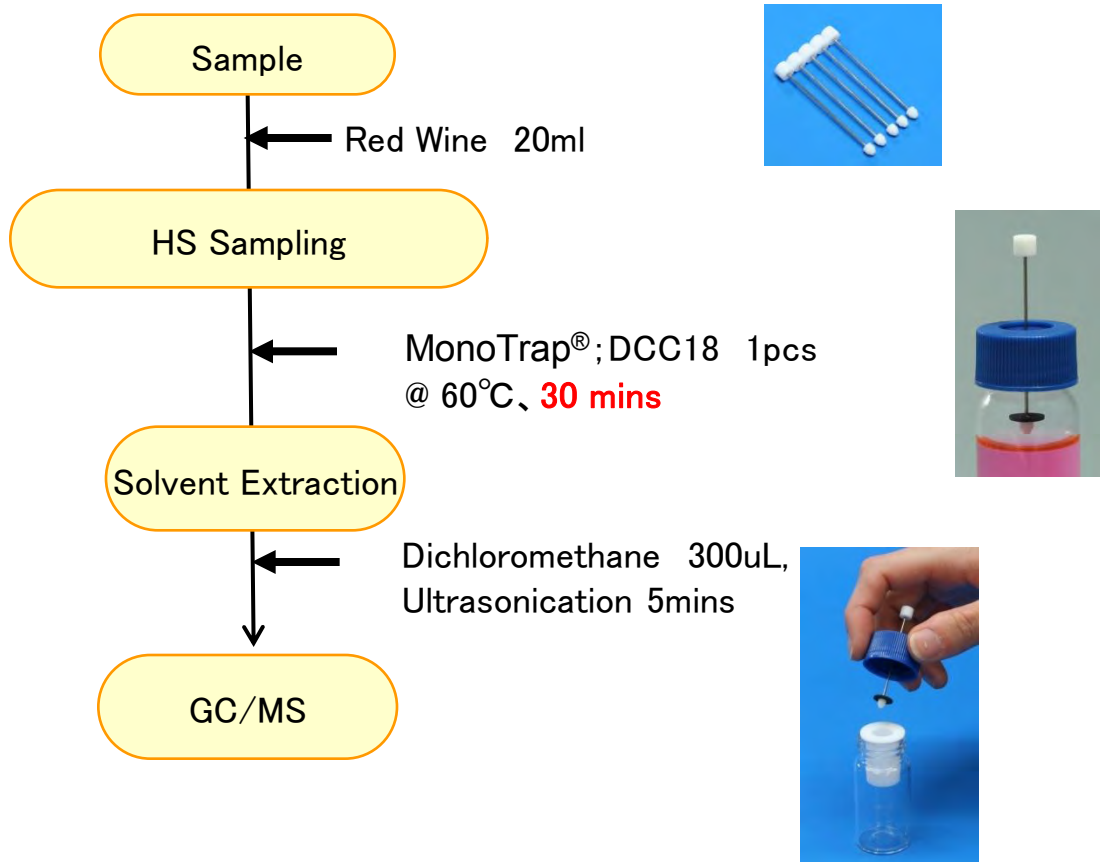


Protocol



③MT Extract Cup with Vial
(Start UP-Kit)

GC Condition

System : SHIMADZU GC-2010、GCMS-QP2010

Column : **InertCap Pure-WAX**(Cat.1010-68142)

0.25mmI.D. × 30m df=0.25μ m

Column Temp : 40°C(5min)→6°C/min→250°C(5min)

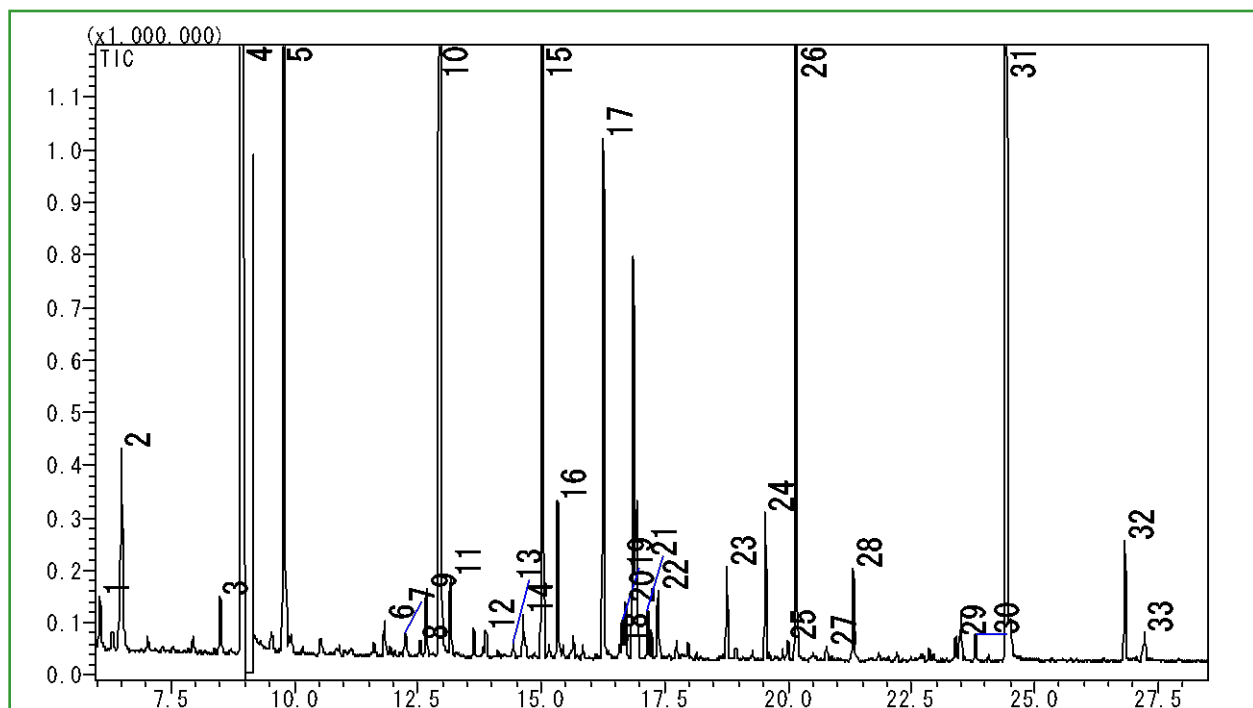
Carrier Gas : He 95kPa

Injection : Split / Splitless, 1uL

250°C

Detection : MS Scan (m/z;55-400)

Ultra inert WAX column **InertCap Pure-WAX** is highly recommended to analyze aromatic compounds together with **MonoTrap®**



1	2,2,6-Trimethyl-6-vinyltetrahydropyran	18	Benzaldehyde
2	Isoamyl acetate	19	3-Ethyl-4-methylpentanol
3	Limonene	20	2-Bornene
4	1-Pentanol	21	n-Propyl propionate
5	Ethyl hexanoate	22	Ethyl dl-2-hydroxycaproate
6	Maleic anhydride	23	β -Cyclocitral
7	3-Methylpentanol	24	Ethyl decanoate
8	1,1-Dimethoxy-2-propanol	25	α -D-Galactopyranose methyl glycoside
9	Ethyl 2-hexenoate	26	Diethyl succinate
10	1-Hexanol	27	3-(Methylthio)-1-propanol
11	cis-3-Hexen-1-ol	28	1,5,8-Trimethyl-1,2-dihydronaphthalene
12	Nonanal	29	Hexanoic acid
13	cis-2-Hexen-1-ol	30	Benzyl Alcohol
14	Ethyl 2-hydroxy-3-methylbutanoate	31	Phenylethyl Alcohol
15	Ethyl octanoate	32	Diethyl dl-malate
16	Furfural	33	Octanoic Acid
17	2-Ethyl-1-hexanol		

Red...[Food] Fragrance Encyclopedia by Japan Perfumery & Flavoring Association